

## SELF-PORTRAITS

Berénice Abbott • Jean-Christophe  
Béchet • Erwin Blumenfeld •  
Brassaï • Choi • Raymond  
Depardon • Louis Faurer • Hervé  
Guibert • Lucien Hervé • Rodolf  
Hervé • Dan Leung • Vivian Maier  
• Arno Minkinen • Ezra Pahmad •  
Arnold Newman • Kourtney Roy •  
Val Telberg • Sabine Weiss • Шолс

**Exhibition November 7, 2014 – January 10, 2015**

From Wednesday to Saturday, 2-7pm and by appointment

**Opening reception – Thursday, November 6, 2014, 6-9pm**

**Contact :**

Françoise Morin

Tel : 01 78 94 03 00

Courriel : [contact@lesdoucheslagalerie.com](mailto:contact@lesdoucheslagalerie.com)

## **The Self-Portrait**

When a photographer shoots him/herself, s/he upsets a code of conduct, and the “shoot” morphs into a real challenge. This show of around 40 modern and contemporary prints reveals the photogenic power of this moment of truth.

Berenice Abbott and Val Telberg preferred to use the photographic medium in an experimental way while Lucien Hervé, Arnold Newman, Vivian Maier, Sabine Weiss and Erwin Blumenfeld made use of the ever present mirror in representing their self-portraits. Starting from his surname, Ezra Nahmad composes an autobiography and Choi, Arno Minkinen, Wols explore the expressive opportunities that their own faces and bodies provide. Rodolf Hervé, terminally ill treats the self-portrait as a catalytic agent to express severe stress. Kourtney Roy, sole heroine of her own intimate illusions thinks of photography as roleplaying. Dan Leung builds a photographic tableau--wedged in the middle of towers in Hong Kong—by which he recalls Chinese identity and wonders about the individual’s place in the city. Brassai in an opium den in 1931, Louis Faurer in New York in 1947, and Raymond Depardon on his scooter in Paris in 1959 or then again with Jean-Christophe Béchét in the footsteps of Robert Frank in 2009, all use the resources of staging but with different arrangements. Characterized by humor, introspection, and virtuosity, the self-portrait always reflects an interior state as Hervé Guibert illustrates so well in his own images.

## Selection of the works

Berenice Abbott  
*Self Portrait – Distortion*, c.1930  
Gelatin silver print, 1945-50  
Photographer's credit stamp on print verso  
15,24 x 12,7 cm



Jean-Christophe Béchet  
*Butte Montana*, 2009  
From the series « American Puzzle »  
Gelatin silver print on Baryta paper, 2012,  
signed  
35,5 x 49,5 cm  
N°1/5



Erwin Blumenfeld  
*Self portrait, New York*, 1952-53  
Gelatin silver print made by the artist,  
vintage  
26 x 33 cm



Brassaï  
*Self-Portrait in an Opium Den, c.1931*  
Gelatin silver print made by the artist,  
1970-75, signed  
20,3 x 26,7 cm



Choi  
*Autoportrait aux Enfers, 2004*  
Gelatin silver print made by the artist on  
Baryta paper, 2014  
32 x 50 cm  
N°1/3



Raymond Depardon  
*Autoportrait au Rolleiflex*  
Ile Saint-Louis, Paris  
1959  
Print on photographic paper made by  
Jacques Henaff, Dupon, 2014, signed  
25 x 25 cm  
N°2/15



Louis Faurer  
*Elevated subway on Third Avenue*  
(looking at Tudor City, NY), c.1947  
Gelatin silver print, c.1980, signed  
23,18 x 24,76 cm



Hervé Guibert  
*La main de l'aveugle, 1983*  
Gelatin silver print made by Didier Léger,  
Imaginoir, with photographer's stamp  
22 x 14,5 cm  
N°3/25



Lucien Hervé  
*Autoportrait, Paris, 1938*  
Gelatin silver print, c.1990-2000, signed  
17 cm x 16,5 cm (on 24 x 30 cm paper)



Rodolphe Hervé  
*Autoportrait, Budapest, 1992*  
Archival ink jet print made by Vimagic,  
2008, with artist's stamp  
45 x 50 cm.  
N°1/7



Dan Leung  
*Blitz*  
Archival ink jet print  
86 x 107 cm  
N°1/10





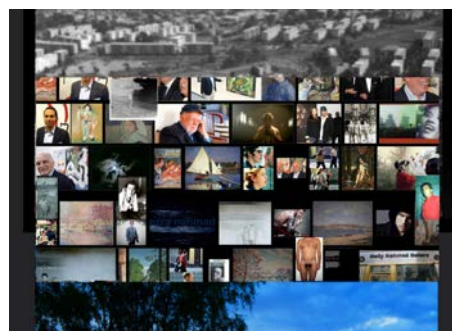
Vivian Maier  
*Self-portrait, n.d.*  
Chromogenic print made by Carl Saytor,  
Luxlab, NY, 2013  
50,8 x 40,6 cm  
N°3/15



Arno Minkkinen  
*Nude Descending a Staircase, Rockport, Maine, 2005*  
Gelatin silver print made by the artist,  
2011, signed  
50 x 60 cm  
N°4/25



Ezra Nahmad  
*J'AUTRE*  
Print on photographic paper made by  
Picto, signed  
37,5 x 30 cm  
N°1/5



Arnold Newman  
*Self Portrait, Season's Greetings, West Palm Beach, FL, 1940*  
Gelatin silver print, c.1990, signed  
25,4 x 20 cm



Kourtney Roy  
*Ils pensent déjà que je suis folle, 2014*  
Carte Blanche PMU  
Print on photographic paper made by  
Picto, signed  
60 x 90 cm  
N° 1/3



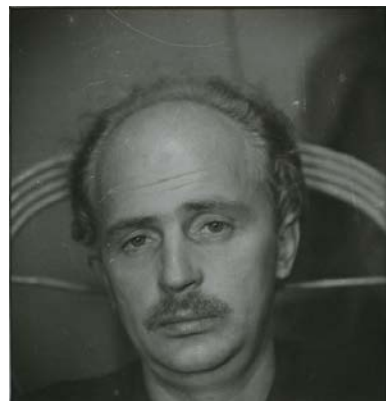
Val Telberg  
*Val Telberg and Kathleen, pre-1950*  
Gelatin silver print, vintage  
27,94 cm x 20,32  
Tirage unique



Sabine Weiss  
*Autoportrait, 1954*  
Gelatin silver print made by the artist,  
vintage  
18 x 23 cm  
Tirage unique



Wols  
*Autoportrait 1940-1941*  
Gelatin silver print, c.1970  
16,3 cm x 16,3 cm  
Tirage unique



With the kind collaboration of the galleries Agathe Gaillard, Camera Obscura, Laurence Miller, Catherine et André Hug, Howard Greenberg, and of Nadia Blumenfeld Charbit.